

**bd** **BURWELL DESIGNS**  
**CAO TEM, INC.**  
Architectural - Engineering Support Services

Architectural - Engineering Support Services  
CAO TEM, INC.

**PROVIDING ARCHITECTS, ENGINEERS,  
BUILDING OWNERS &  
REAL ESTATE PROFESSIONALS  
WITH  
INNOVATIVE, ACCURATE &  
PROFESSIONAL DESIGN, CAD &  
CAFM SERVICES**

10621 GREENBELT, SUITE 206-8

LANHAM, MD 20607

[info@burwelldesignsllc.com](mailto:info@burwelldesignsllc.com)

office 301.328.2637

[www.burwelldesignsllc.com](http://www.burwelldesignsllc.com)



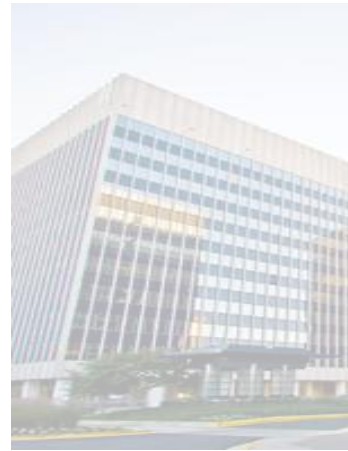


**“WE ARE ONLY AS GOOD AS  
OUR CLIENTS BELIEVE WE ARE”**

## PROFILE

**Burwell Designs CADTEM** is an American based firm, founded in Prince George’s County, Maryland in May 2002. The team is comprised of registered Architects, designers, entrepreneurs, Information technology professionals, CAD and BIM specialist and trade professionals from various disciplines who saw a need for support services in our highly competitive industry.

With well over 75 combined years of experience and more than 100 million gross square feet of designed space our staff can provide you with knowledgeable & professional support on any project.



## OUR PHILOSOPHY

With the rapid advancements in technology it is becoming more difficult to maintain a competitive edge without taking a beating on your bottom line. Upgrading outdated or buying new software and training your staff or hiring new staff to use the software can be extremely expensive. Burwell Designs maintains the latest software in CAD / CAFM and has the expert staff to operate it to fullest capabilities. We can be your design team on an “as-needed basis”. We can be your eyes in the field providing you the building information you require to plan your project. We can be your production team providing you the resources to produce the project documents and we can be your assessment team providing evaluations to help you maintain your properties long after the project is complete. **Burwell Designs** can be your Architectural-Engineering Support staff.

## OUR SERVICES

- CAD SUPPORT SERVICES
  - PAPER TO CAD CONVERSIONS
  - FILE TYPE CONVERSIONS
  - RED-LINE PICK UPS
  - PLOTTING / SCANNING
- CONSTRUCTION DOCUMENTS
  - DD THRU CONSTRUCTION
  - INTELLIGENT DRAFTING BY EXPERIENCED PROFESSIONALS
  - COMPREHENSIVE QUALITY ASSURANCE / CONTROL PROGRAM
  - DELIVERED TIMELY, ACCURATE & WITHIN BUDGET
- BIM SUPPORT / MODEL MANAGEMENT
- FACILITIES MANAGEMENT
  - SPACE PLANNING
  - AS-BUILT DRAWINGS
  - BOMA AREA TABULATIONS
  - LEASING EXHIBITS
  - MAINTENANCE / BUILDING SYSTEMS LIFE-CYCLE EVALUATIONS
- PERMIT EXPEDITING SERVICES

## ARCHITECTURAL DESIGN SERVICES

---

**Burwell Designs** is a full service Architectural firm offering planning, architecture and interior design services. The firm is comprised of architects registered in MD, DC, VA and DE. We are members of the AIA, the National Association of Minority Architects and NCARB. Our team has more the 30 years of experience in both residential and commercial design.

Our practice provides Clients with designs that are both innovative and functional delivered with the highest quality service possible. We deliver built environments the express our Clients profiles and personalities.

Our expertise in technology and constant research of the latest innovations building products and materials allows us to more freely design with a versatility not often found in many firms.



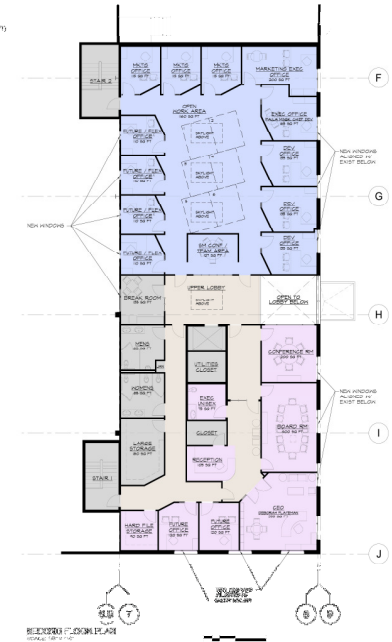
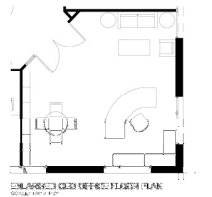
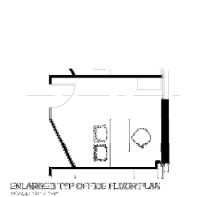
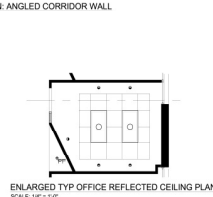
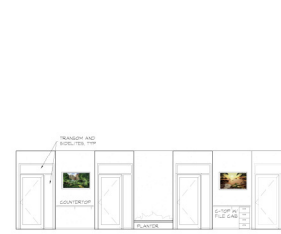
# CAD SUPPORT SERVICES

**Burwell Designs** provides a variety of CAD / CAFM services to our Clients ranging from red-line pickups to paper to CAD conversions to 2D / 3D renderings and presentation/blocking/ space plans. All of these services are in addition to our construction document production, BIM development and as-built drawings and BOMA diagrams.

We use the state of the art software to produce and deliver accurate, legible documents.

Burwell Designs works timelessly to maintain our staffs' proficiency in not only in the latest software but the current local code compliance requirements and new product specifications. We have developed, maintained and constantly updating our extensive CAD library to ensure timely delivery on all projects.

Our comprehensive quality assurance, quality control program ensures consistency in project presentation and delivery.



# BIM (BUILDING INFORMATION MODEL) MANAGEMENT

---

**BIM** is the process of generating and managing building data through its life cycle using three-dimensional, real-time, dynamic building modeling software to increase productivity during design and construction. The process produces the Building Information Model (BIM) which encompasses building geometry, special relationships, geographical information along with quantities and properties of building components.

**Burwell Designs** provides advanced project information to our Clients by creating parametric, sophisticated and intelligent models. Through the integrated BIM process, we along with designers, engineers, builders and Owners design, analyze, document and deliver projects for the conceptual phase through construction and beyond.



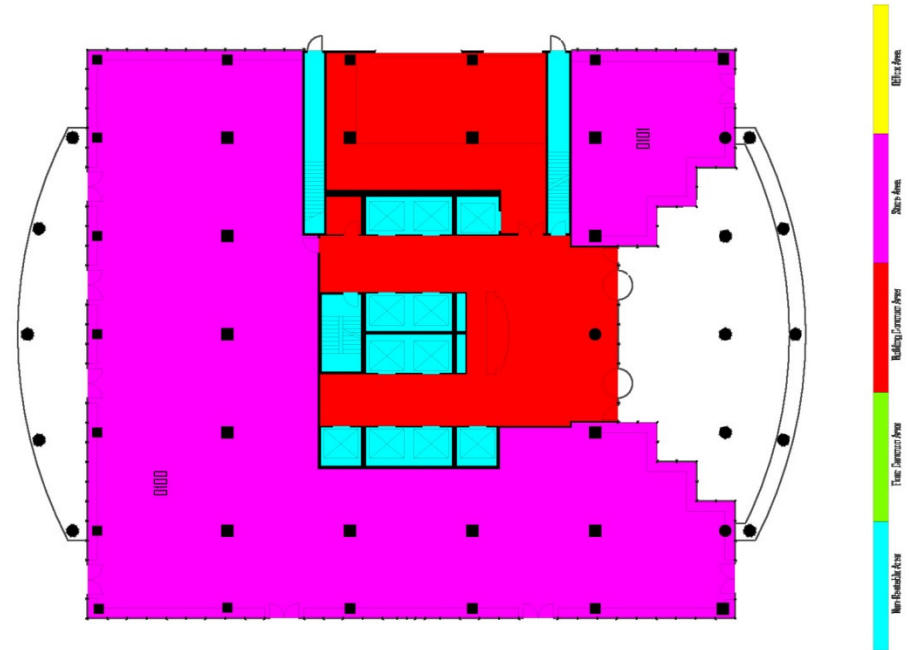
# FACILITIES MANAGEMENT SUPPORT SERVICES

The **Burwell Designs** provides support services to commercial real estate professionals and building owners.

Our site and facility assessment services range from property condition assessments and building evaluation reports to code compliance reviews and BOMA/ADA Assessments. The **Burwell Designs** team has assisted commercial building owners, real estate professionals, facility managers, corporate real estate managers, lenders, real estate investment advisors and other senior decision-makers in evaluating physical needs and potential risk associated with properties on which they are considering loans, investments, sales or purchases.

Investors and Owners rely on **Burwell Designs** to provide facility assessment and verifications to evaluate physical conditions of building components' estimated useful life and cost estimates associated with maintenance and capital repairs.

Even the most disciplined of businesses experience some level of undocumented renovation to their facility portfolio as they grow. **Burwell Designs** field verification services can provide immediate and significant impact to our Clients businesses.



1234 Main Street  
Washington, DC

BOMA Area Calculation

FLOOR / SUITE	GROSS MEASURED AREA	NON-RENTABLE AREA	FLOOR RENTABLE AREA	USABLE OFFICE / STORE AREA	USEABLE BUILDING COMMON AREA	FLOOR COMMON AREA	FLOOR COMMON FACTOR	BASIC OFFICE / STORE AREA	BASIC BUILDING COMMON AREA	BUILDING COMMON FACTOR	RENTABLE OFFICE / STORE AREA
SUITE 0010				6,371.9			1.14860	7,318.8		1.01999	7,465.1
SUITE 0020				470.5			1.14860	540.4		1.01999	551.2
SUITE 0030				1,466.7			1.14860	1,682.3		1.01999	1,715.8
SUITE 0040				1,028.8			1.14860	1,181.6		1.01999	1,205.2
SUITE 0050				2,599.2			1.14860	2,985.4		1.01999	3,045.1
BASEMENT	17,086.1	1,168.0	15,918.1	11,935.1	1,923.7	2,059.4	1.14860	13,706.5	2,209.6	1.01999	13,862.5
SUITE 100				8,123.3			1.00000	8,123.3		1.01999	8,295.7
SUITE 101				1,133.3			1.00000	1,133.3		1.01999	1,156.0
1ST FLOOR	13,963.7	1,484.3	12,479.3	9,256.6	3,222.7		1.00000	9,256.6	3,222.7	1.01999	9,441.7
SUITE 200				15,377.4			1.03164	15,864.0		1.10999	16,181.1
2ND FLOOR	17,054.1	1,190.1	15,864.0	15,337.4		486.5	1.03164	15,864.0		1.01999	16,181.1
SUITE 300				15,377.4			1.03164	15,864.0		1.10999	16,181.1
3RD FLOOR	17,054.1	1,190.1	15,864.0	15,337.4		486.5	1.03164	15,864.0		1.01999	16,181.1
SUITE 400				15,377.4			1.03164	15,864.0		1.10999	16,181.1
4TH FLOOR	17,054.1	1,190.1	15,864.0	15,337.4		486.5	1.03164	15,864.0		1.01999	16,181.1
SUITE 500				5,387.7			1.09895	5,920.9		1.01999	6,039.2
SUITE 545				9,047.6			1.09895	9,943.1		1.01999	10,141.9
5TH FLOOR	17,054.1	1,190.1	15,864.0	14,435.5		1,428.4	1.09895	15,864.0		1.01999	16,181.1
SUITE 600				15,377.4			1.03164	15,864.0		1.10999	16,181.1
6TH FLOOR	17,054.1	1,190.1	15,864.0	15,337.4		486.5	1.03164	15,864.0		1.01999	16,181.1
SUITE 700				2,311.0			1.09895	2,526.6		1.10999	2,594.4
SUITE 710				1,609.8			1.09895	1,753.0		1.10999	1,817.1
SUITE 714				1,524.5			1.09895	1,675.3		1.09999	1,708.8
SUITE 720				1,262.9			1.09895	1,387.9		1.10999	1,415.6
SUITE 730				5,123.9			1.09895	5,603.9		1.10999	5,777.1
SUITE 734				974.5			1.09895	1,071.0		1.10999	1,092.4
SUITE 750				908.5			1.09895	998.4		1.09999	1,018.4
SUITE 756				608.5			1.09895	662.8		1.10999	706.7
7TH FLOOR	17,054.1	1,190.1	15,864.0	14,435.5		1,428.4	1.09895	15,864.0		1.01999	16,181.1
SUITE 800				7,946.4			1.09555	8,596.1		1.10999	8,799.0
SUITE 840				6,634.0			1.09555	7,267.8		1.10999	7,413.1
8TH FLOOR	17,054.1	1,190.1	15,864.0	14,468.4		1,383.5	1.09555	15,864.0		1.01999	16,181.1
SUITE 950				15,377.4			1.03164	15,864.0		1.10999	16,181.1
9TH FLOOR	17,054.1	1,190.1	15,864.0	15,337.4		486.5	1.03164	15,864.0		1.01999	16,181.1
SUITE 1000				15,377.4			1.03164	15,864.0		1.10999	16,181.1
10TH FLOOR	17,054.1	1,190.1	15,864.0	15,337.4		486.5	1.03164	15,864.0		1.01999	16,181.1
SUITE 1100				2,820.1			1.14532	3,000.9		1.01999	3,060.0
SUITE 1110				1,618.0			1.14532	1,853.1		1.01999	1,890.1
SUITE 1120				972.8			1.14532	1,114.1		1.01999	1,138.4
SUITE 1128				855.8			1.14532	922.1		1.01999	921.1
SUITE 1130				2,390.2			1.14532	2,737.5		1.01999	2,792.2
SUITE 1140				2,781.6			1.14532	3,185.9		1.01999	3,249.5
SUITE 1150				1,129.2			1.14532	1,293.3		1.01999	1,319.2
SUITE 1156				1,950.1			1.14532	2,175.3		1.01999	2,219.8
11TH FLOOR	17,054.1	1,171.4	15,882.7	15,887.5		2,015.2	1.14532	18,882.7		1.01999	19,200.2

## OUR CLIENTS

---

### **COMMERCIAL CLIENTS**

Jones Lang LaSalle  
Quadrangle Development Corp  
Washington Real Estate Investment Trust  
Zumot Realty Management Company  
Asadorian Realty  
Glenbrook Properties Inc.  
Inle Development Corp  
Moore Associates  
The Westfield Group

Soe Lin & Associates  
The Adams Design Group  
Ballard Mensua Architects  
Brian G. Thornton Designs  
3G Architects  
Allusion Designs  
Dick Thomas & Co Architects

B&B Home Improvement Company  
The Home Improvement Company  
Reese Contracting

HITT Contracting  
PMC Contracting  
Federal Realty Contracting

### **SIGNIFICANT PROJECTS**

West Gude Office Park – Moore Associates / Washington Real Estate Investment Trust  
Bethesda Towers – Quadrangle Development / Moore Associates  
Vint Hill Office Park – Zumot Realty Management Company  
National Maryland Park & Planning Historic Sites Condition Assessments- M-NCPPC  
NASA Deferred Maintenance Assessments – Various Site throughout the US- NASA

The Shops at National Place; Quadrangle Development Corp; SL&A  
Inle Condominiums – Inle Development Corp.  
The Shoppes at Dobbin Square – Glenbrook Properties Inc; SL&A  
The Urban N. Zink Office Building – Urban N. Zink Contractors; The Adams Design Group  
EPOK Tenant Fit-Out – Moore Associates / SL&A  
Meiwah Express – Food Court Restaurant- Quadrangle Development Corp / BGT Designs

Garrard Residence – Two Story Addition- Arlington, VA  
Tanner Residence – Two Story Addition- Cheverly, MD  
Dartmouth Residence – Two Story Addition- Lanham, MD  
Jackson Residence – Interior Renovation – Lanham, MD  
Burwell Residence – Interior Renovation – Lanham, MD