

No.	Location	Type	Size	Security		Description	Material	Finish	Frame	Hardware		Details	Remarks
				Y	N					Label	Set		
D1	6478-A	C	3'-0" x 7'-0" x 1/2"	*	HCM	Rtd	GM	Prd	1				By Structure Manufacturer
D2	6478-B	C	3'-0" x 7'-0" x 1/2"	*	HCM	Rtd	GM	Prd	1				By Structure Manufacturer
D3	6478-C	C	3'-0" x 7'-0" x 1/2"	*	HCM	Rtd	GM	Prd	1				By Structure Manufacturer
D4	Fire Control	A	3'-0" x 7'-0" x 1/2"	*	HCM	Rtd	GM	Prd	4				By Structure Manufacturer
D5	6478-C	A	3'-0" x 7'-0" x 1/2"	*	HCM	Rtd	GM	Prd	3				Fire Rated
D6	6478-B	A	3'-0" x 7'-0" x 1/2"	*	HCM	Rtd	GM	Prd	3				By Structure Manufacturer
D7	Fire Control	A	3'-0" x 7'-0" x 1/2"	*	HCM	Rtd	GM	Prd	4				By Structure Manufacturer
D8	6478-A	A	3'-0" x 7'-0" x 1/2"	*	HCM	Rtd	GM	Prd	3				By Structure Manufacturer
D9	6478-A	B	3'-0" x 7'-0" x 1/2"	*	HCM	Rtd	GM	Prd	3				By Structure Manufacturer
D10	6478-A	C	3'-0" x 7'-0" x 1/2"	*	HCM	Rtd	GM	Prd	3				By Structure Manufacturer
D11	6478-A	B	3'-0" x 7'-0" x 1/2"	*	HCM	Rtd	GM	Prd	3				By Structure Manufacturer
D12	6478-A	C	3'-0" x 7'-0" x 1/2"	*	HCM	Rtd	GM	Prd	3				By Structure Manufacturer
D13	6478-A	B	3'-0" x 7'-0" x 1/2"	*	HCM	Rtd	GM	Prd	3				By Structure Manufacturer
D14	6478-B	A	3'-0" x 7'-0" x 1/2"	*	HCM	Rtd	GM	Prd	3				By Structure Manufacturer
D15	6478-B	A	3'-0" x 7'-0" x 1/2"	*	HCM	Rtd	GM	Prd	3				By Structure Manufacturer

DOOR SCHEDULES

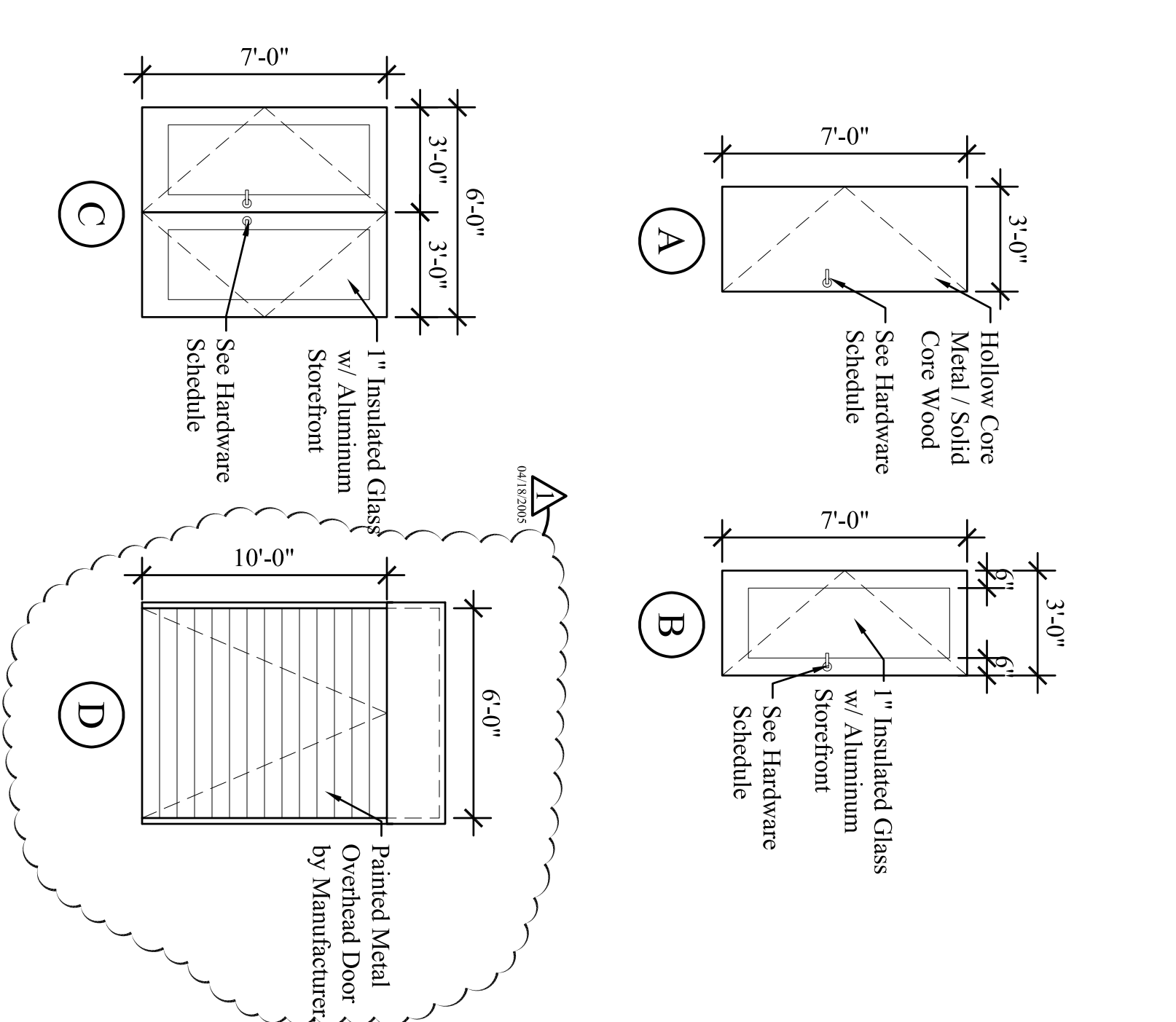
HARDWARE SET #1
 Double Exterior Locked w/ Concealed Closer
 Lockset
 Hinges
 Silencers
 Floor
 Office Function:
 ANSI F82 - Always unlocked from inside, outside locked by turning key, unlocked by turning inside or key.

HARDWARE SET #2
 Single Exterior Locked w/ Concealed Closer
 Lockset
 Hinges
 Silencers
 Floor
 Office Function:
 ANSI F82 - Always unlocked from inside, outside locked by turning key, unlocked by turning inside or key.

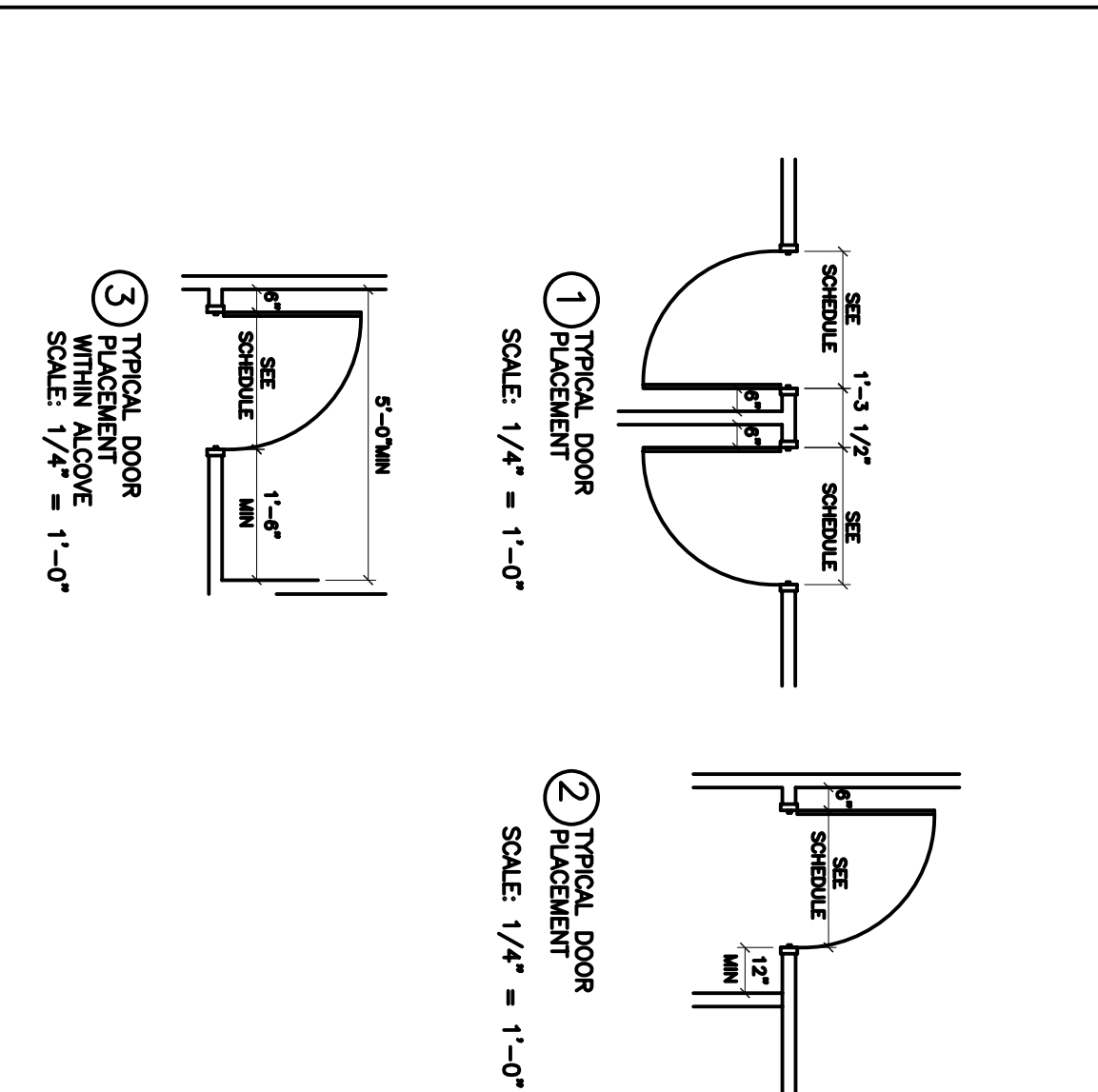
HARDWARE SET #3
 Single Exterior Thumb Locked w/ Closer
 Lockset
 Hinges
 Silencers
 Wall Stop
 Office Function:
 ANSI F82 - Always unlocked from inside, outside locked by turning key, unlocked by turning inside or key.

HARDWARE SET #4
 Locked w/ Closer
 Lockset
 Hinges
 Silencers
 Wall Stop
 Office Function:
 ANSI F86 - Always unlocked from inside, always locked on outside, unlocked by turning key.

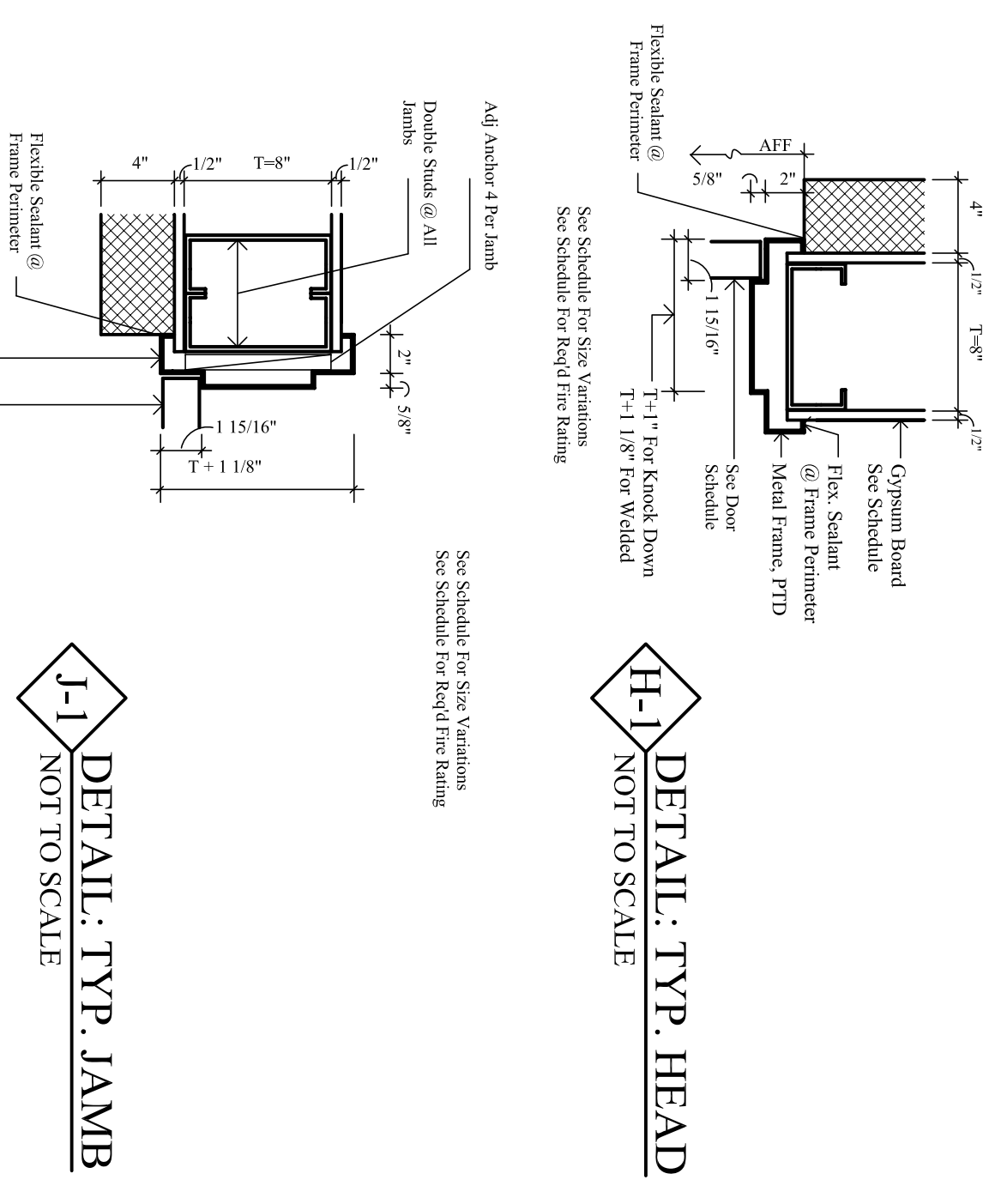
DOOR TYPES



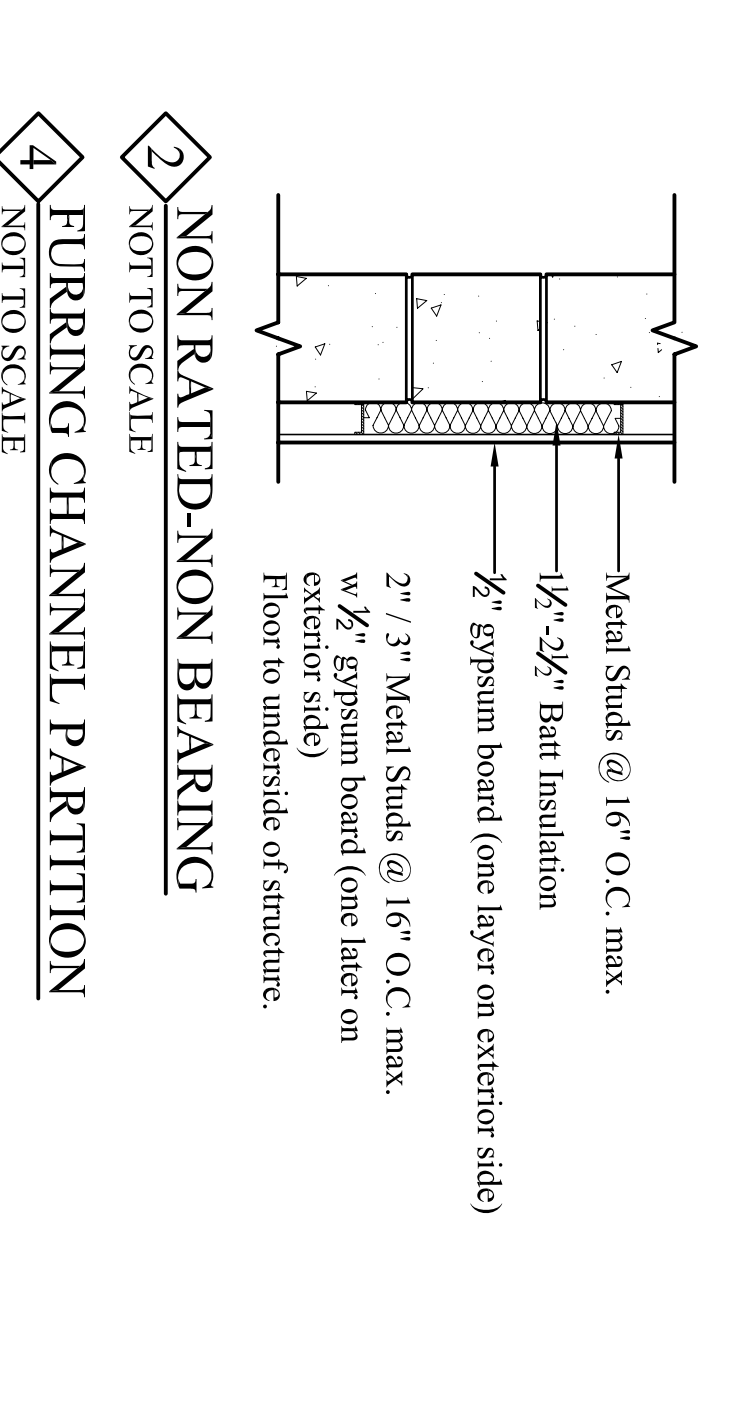
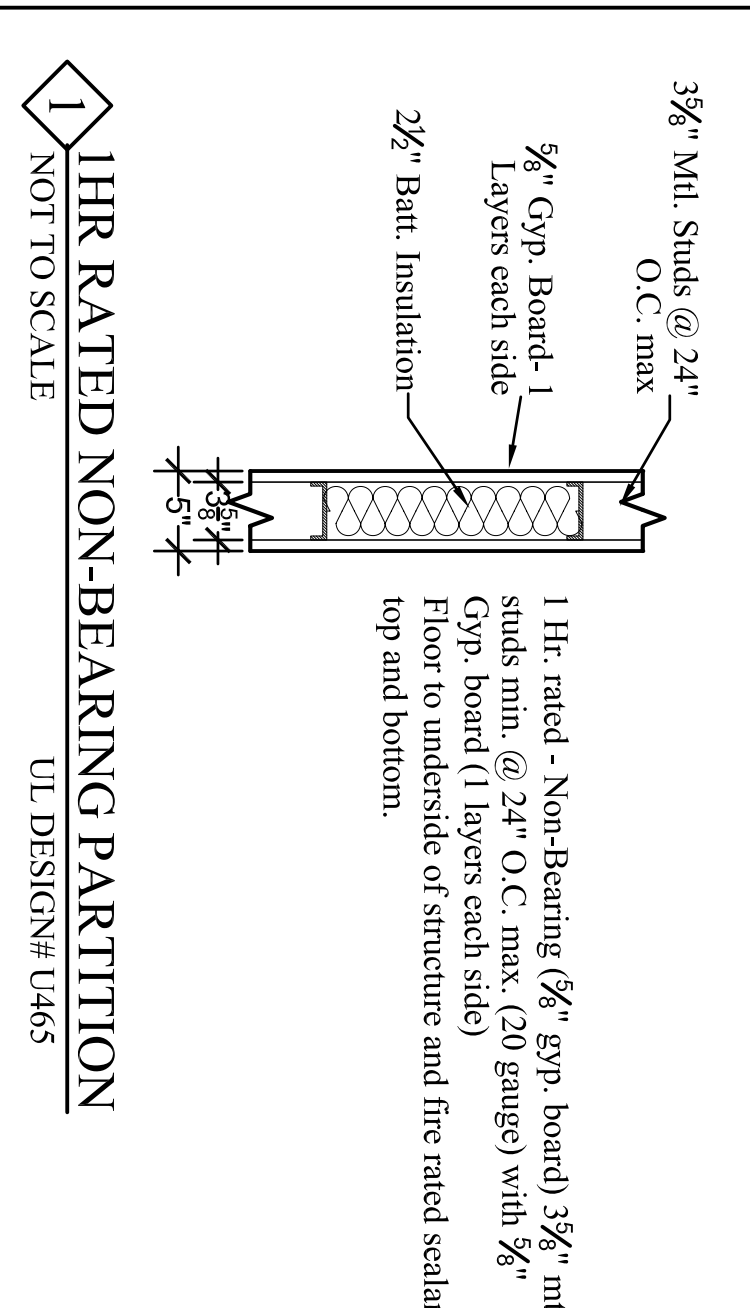
DOOR SWINGS



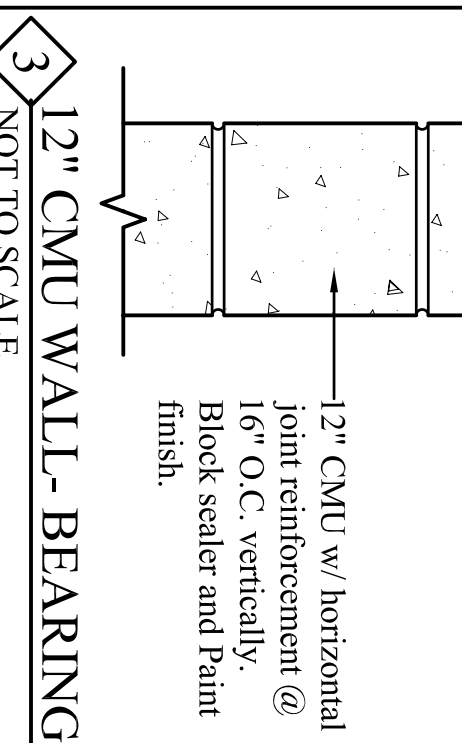
HEAD / JAMB DETAILS



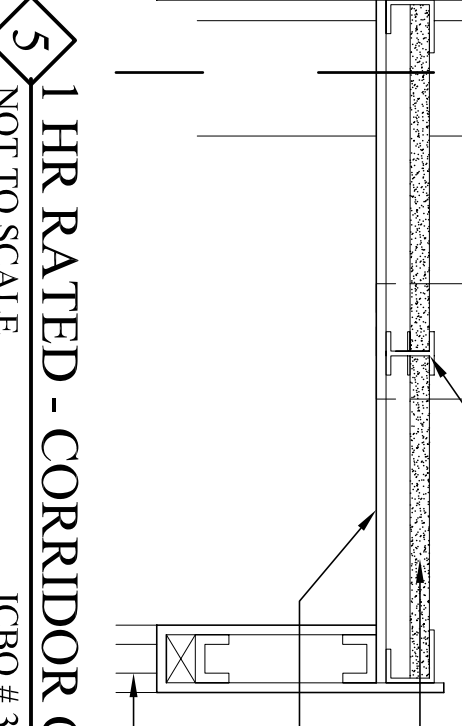
PARTITION TYPES



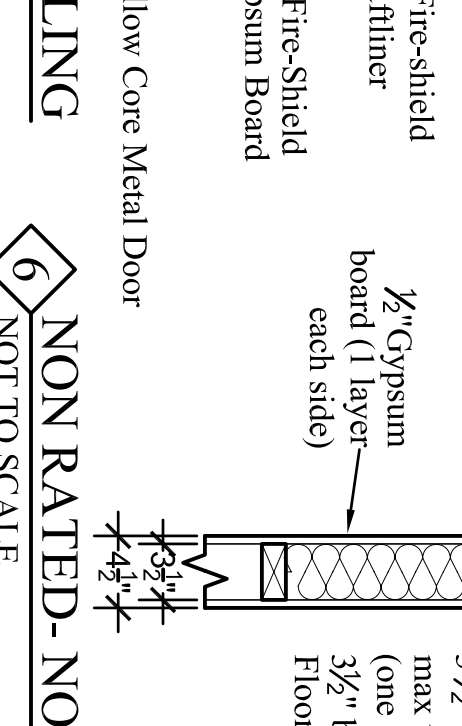
12" CMU WALL - BEARING



1HR RATED - CORRIDOR CEILING



NON RATED - NON BEARING



SL&A
 Architecture, Interiors,
 Planning
 4340 East West Highway
 Suite 105
 Bethesda, Maryland
 20814 USA
 301.986.9300
 Fax:986-0500

Notes
 Consultants
 META ENGINEERS, INC.
 1515 Wilson Blvd.
 Arlington, VA 22209
 (703) 224-1188
 metaengineers.com

COLUMBIA ENGINEERING INC.
 6470 Dobbin Road
 Columbia, MD 21045
 (410) 992-9970
 columbiacengineering.com

THE SHOPPES at DOBBIN CORNER
 6478 DOBBIN CENTER WAY
 COLUMBIA, MD

NEW RETAIL BUILDING

DOBBIN CENTER LTD.

DETAILS / SCHEDULES

Date	Issue
07-01-2004	REVIEW
08-17-2004	REVIEW
11-19-2004	MEP ISSUE-Prelim
12-1-2004	Contractor Bid
03-22-2005	PERMIT ISSUE
04-18-2005	CLIENT COMMENTS
05-10-2005	CLIENT COMMENTS

Drawn By	ALB
Chkd By	MG
Job No.	

Sheet No. **A-8**